

# FOR LEASE

## Westridge Mall

WEST SIDE RETAIL - ELLIS ROAD CORRIDOR

8505 West 26th Street | Sioux Falls, SD 57106



### SIZE

2,152 sqft



### PRICE

\$17.00 psf (NNN)

Estimated NNN: \$5.50 psf



### T.I.A.

\$30 psf



### DELIVERY

Warm shell. Call broker for landlord's work letter.



### LOCATION

Located along the rapidly developing Ellis Road Corridor, this site is near schools and surrounded by thriving retail destinations, townhomes, single-family homes, and modern apartments.



### AREA TENANTS

Shenanigans Sports Bar & Grill, Fit Body Boot Camp, Ellis Nail Bar, Risen Hope Baptist Church, Edward Jones, State Farm Insurance, Casey's, Lewis Drug Store, Sanford Acute Care, Fareway Meat and Grocery, Valentino's Pizza, Dollar Tree, McDonald's, Valvoline, Starbucks, Taco Bell

Information deemed reliable, but not guaranteed.

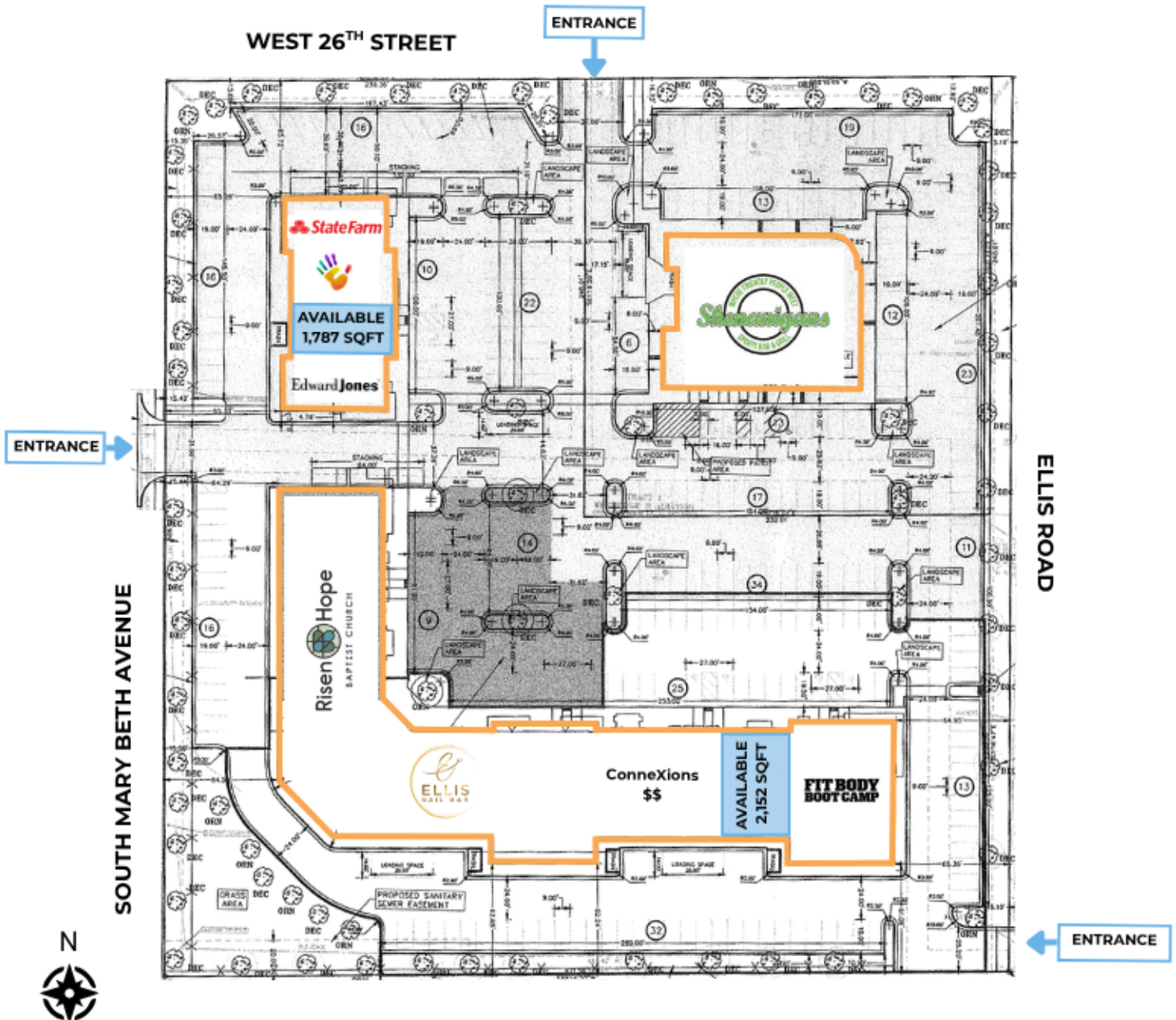
# FOR LEASE

## Area Map Westridge Mall



FOR  
LEASE

Site Map  
Westridge Mall



**FOR  
LEASE**

*Site Overview*  
**Westridge Mall**



FOR  
LEASE

*Building Floor Plan*  
**Westridge Mall**



# FOR LEASE

# Photos Westridge Mall

