

DEVELOPMENT ENGINEERING PLAN - PH1, 2 & 3
RIVER PARK ADDITION - BRANDON, SD
LOT LAYOUT PLAN

REVISIONS:

1	DATE	DESC
2	DATE	DESC
3	DATE	DESC

PROJECT NUMBER

23024502

DATE: 1/31/2025

DRAWN BY: TRP

CHECKED: EDC

SHEET:

C1.3



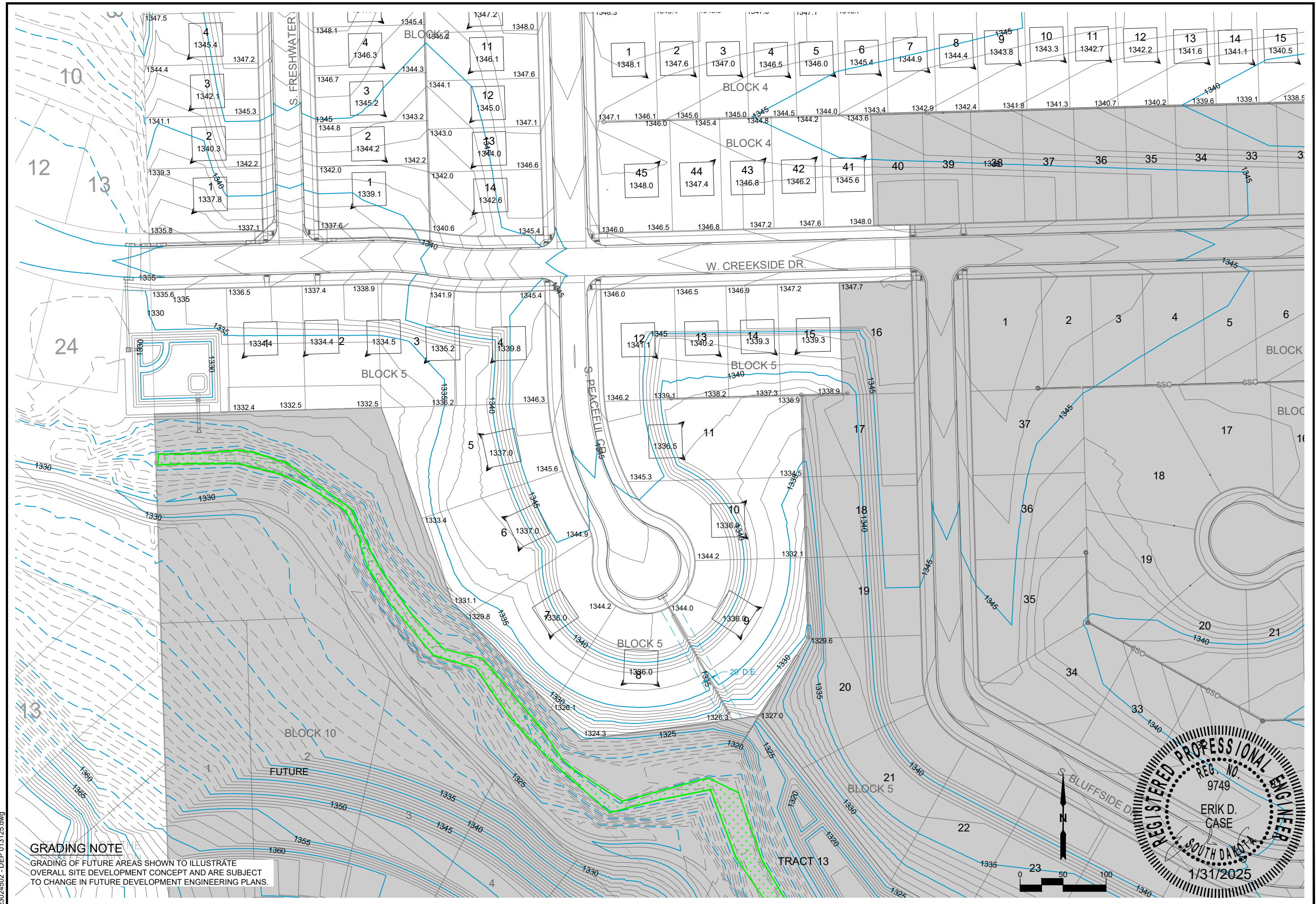
NOTE
FUTURE LOT LAYOUT SHOWN TO ILLUSTRATE OVERALL SITE DEVELOPMENT CONCEPT AND ARE SUBJECT TO CHANGE IN FUTURE DEVELOPMENT ENGINEERING PLANS.

TRACT 4 OF THE BLUFFS ADDITION

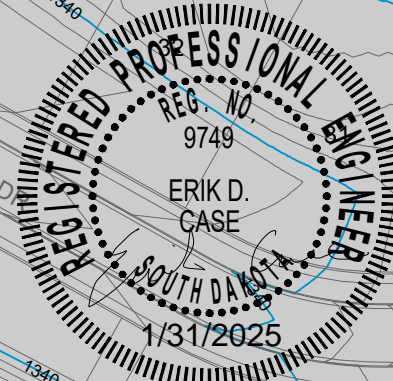
TRACT 13
347,264 SF
7.68 Ac. ±



23024502 - DEP 013125.dwg



GRADING NOTE
 GRADING OF FUTURE AREAS SHOWN TO ILLUSTRATE OVERALL SITE DEVELOPMENT CONCEPT AND ARE SUBJECT TO CHANGE IN FUTURE DEVELOPMENT ENGINEERING PLANS.



REVISIONS:

1	DATE	DESC
2	DATE	DESC
3	DATE	DESC

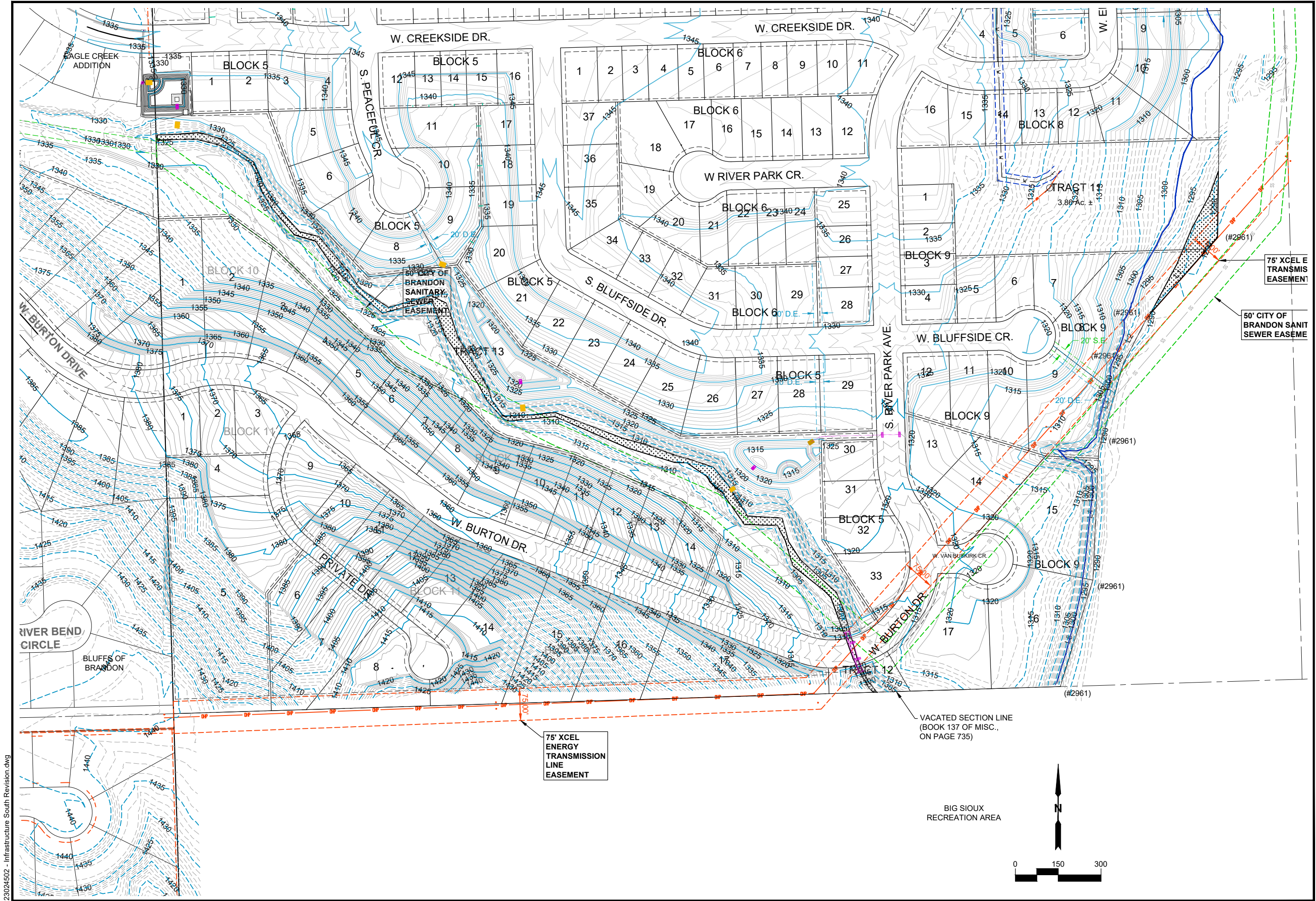
PROJECT NUMBER

23024502

DATE: 1/31/2025
 DRAWN BY: TRP
 CHECKED: EDC

SHEET:
E1.3

23024502 - DEP 013125.dwg



CIVIL SITE +
LAND DEVELOPMENT
P.O. BOX 652
SIOUX FALLS, SD
57101
+
605-800-1912

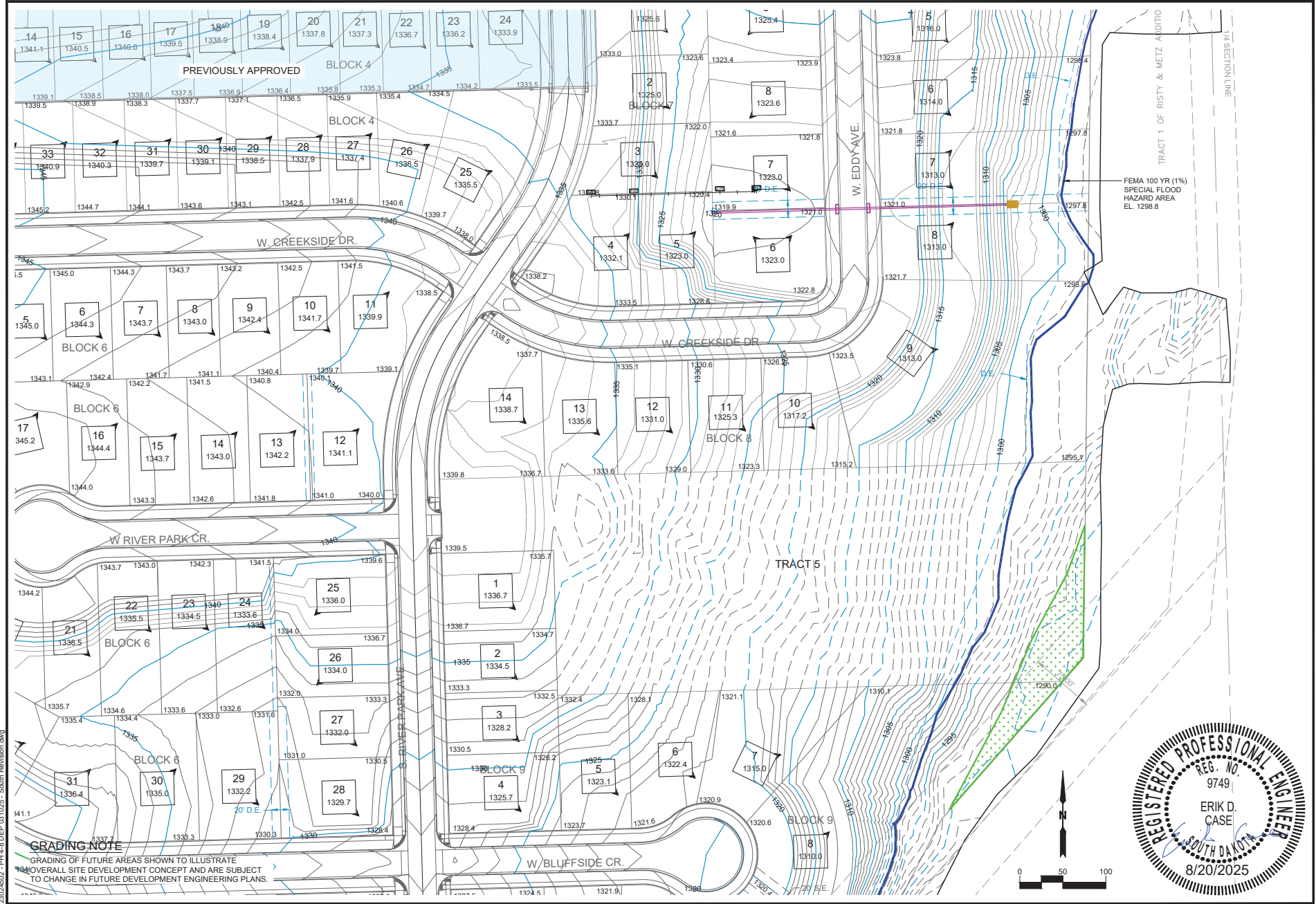
SOUTH REVISIONS
 RIVER PARK ADDITION
 EXHIBIT 3 - GRADING

REVISIONS:	
1	DATE DESC
2	DATE DESC
3	DATE DESC

PROJECT NUMBER
23024502
DATE: 4/6/25
DRAWN BY: TRP
CHECKED: EDC

SHEET:
E3

23024502 - Infrastructure South Revision.dwg



23024502 - PH 4-8 DEP. (01025 - South Revision.dwg)



CRUISE SITE + LAND DEVELOPMENT
 P.O. BOX 652
 SIOUX FALLS, SD
 57101
 +
 605-800-1912

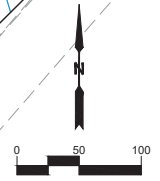
DEVELOPMENT ENGINEERING PLAN - PH 4 - 8
RIVER PARK ADDITION - BRANDON, SD
 GRADING PLAN

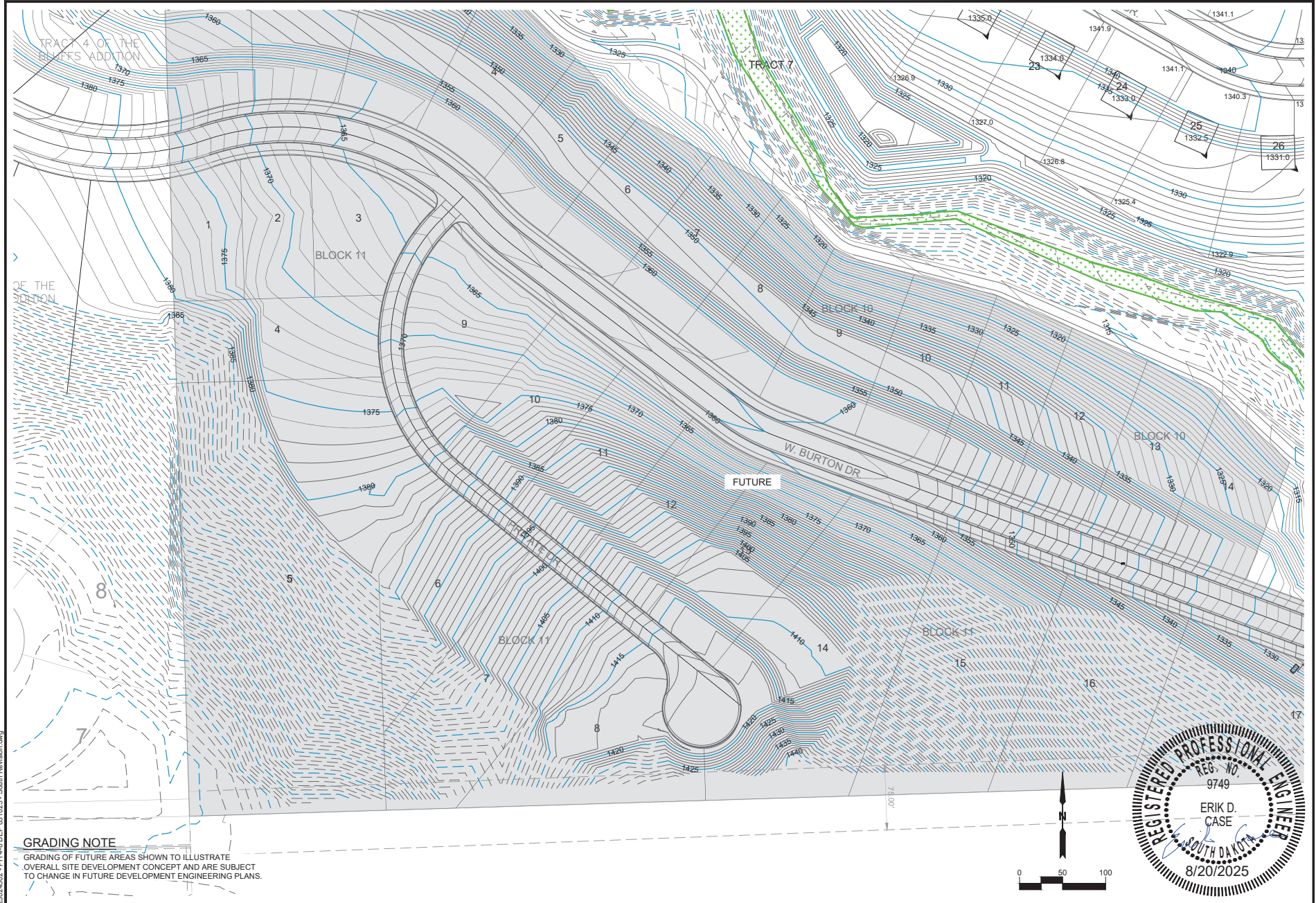
REVISIONS:

1	DATE	DESC
2	DATE	DESC
3	DATE	DESC

PROJECT NUMBER
23024502
 DATE: 6/6/2025
 DRAWN BY: TRP
 CHECKED: EDC

SHEET:
E1.4





TRACT 4 OF THE
BLUFFS ADDITION

TRACT 7

BLOCK 11

BLOCK 10

BLOCK 10

BLOCK 11

BLOCK 11

FUTURE

W. BURTON DR

GRADING NOTE

GRADING OF FUTURE AREAS SHOWN TO ILLUSTRATE
OVERALL SITE DEVELOPMENT CONCEPT AND ARE SUBJECT
TO CHANGE IN FUTURE DEVELOPMENT ENGINEERING PLANS.



**CRUISE SITE +
LAND DEVELOPMENT**
P.O. BOX 652
SIOUX FALLS, SD
57101
+
605-800-1912

DEVELOPMENT ENGINEERING PLAN - PH 4 - 8
RIVER PARK ADDITION - BRANDON, SD
GRADING PLAN

REVISIONS:

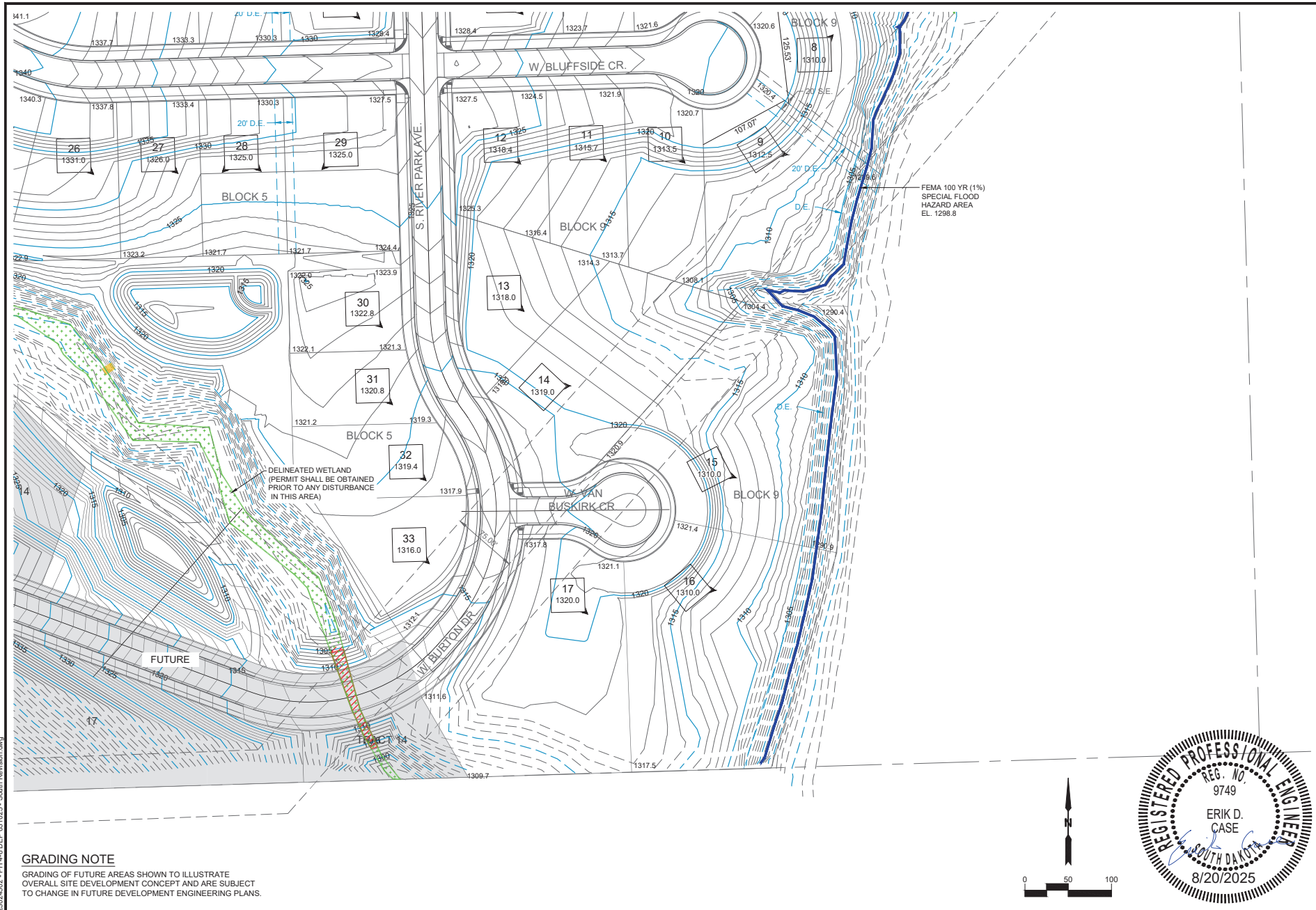
1	DATE	DESC
2	DATE	DESC
3	DATE	DESC

PROJECT NUMBER
23024502
DATE: 6/6/2025
DRAWN BY: TRP
CHECKED: EDC

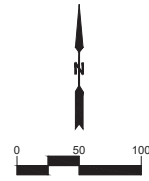
SHEET:
E1.5



23024502 - PH 4-8 DEP. 081025 - South Revision.dwg



GRADING NOTE
 GRADING OF FUTURE AREAS SHOWN TO ILLUSTRATE
 OVERALL SITE DEVELOPMENT CONCEPT AND ARE SUBJECT
 TO CHANGE IN FUTURE DEVELOPMENT ENGINEERING PLANS.



THE DESIGN GROUP
 CIVIL SITE & LAND DEVELOPMENT
 P.O. BOX 652
 SIOUX FALLS, SD
 57101
 +
 605-800-1912

DEVELOPMENT ENGINEERING PLAN - PH 4 - 8
 RIVER PARK ADDITION - BRANDON, SD
 GRADING PLAN

REVISIONS:

1	DATE	DESC
2	DATE	DESC
3	DATE	DESC

PROJECT NUMBER
23024502
 DATE: 6/6/2025
 DRAWN BY: TRP
 CHECKED: EDC

SHEET:
E1.6

23024502 - PH 4-8 DEP. 031025 - South Revision.dwg