

**FOR
SALE**

MAD MARY'S

ICONIC RESTAURANT IN FLANDREAU



306 North Veterans Street
Flandreau, SD 57028

NEW PRICE



SIZE

Main Floor: 4,320 sqft
Lower Level: 4,320 sqft
Total: 8,640 sqft

Parcel: 8.76 acres



PRICE

NEW PRICE: \$900,000



LOCATION

On the northwest edge of
Flandreau, SD.



LAYOUT

The main floor includes the
dining room, kitchen, lounge
and bar. The lower-level
features two party rooms and
a two-bedroom apartment.



FF&E

All FF&E, equipment and
inventory included.



HISTORY

Mad Mary's has been a
premier area steakhouse
for over 30 years.

Information deemed reliable, but not guaranteed.
Property is co-listed with Justin Heng Real Estate.



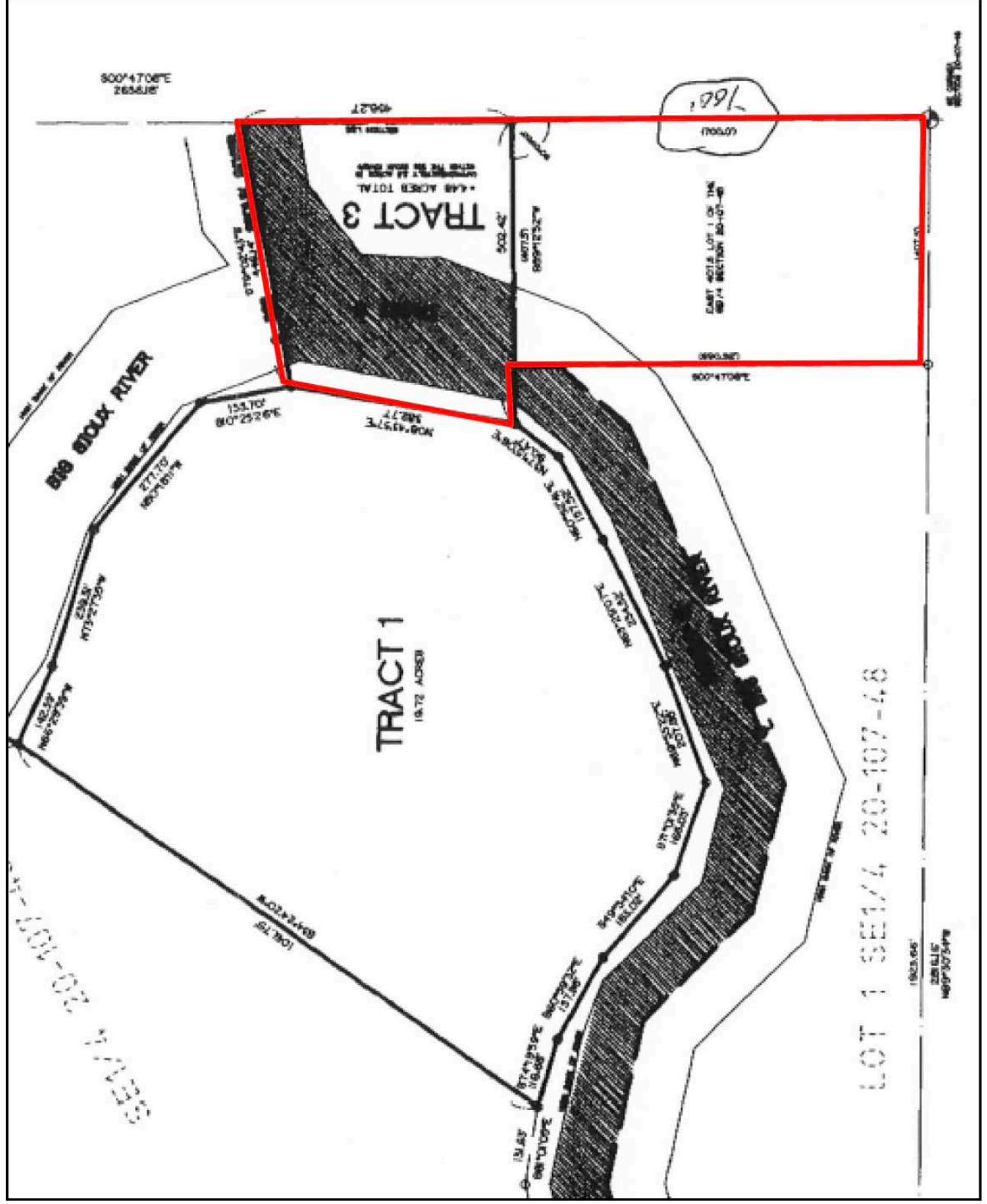
2571 S Westlake Drive #100
Sioux Falls, SD 57106
605.361.8211 | VBCcommercial.com



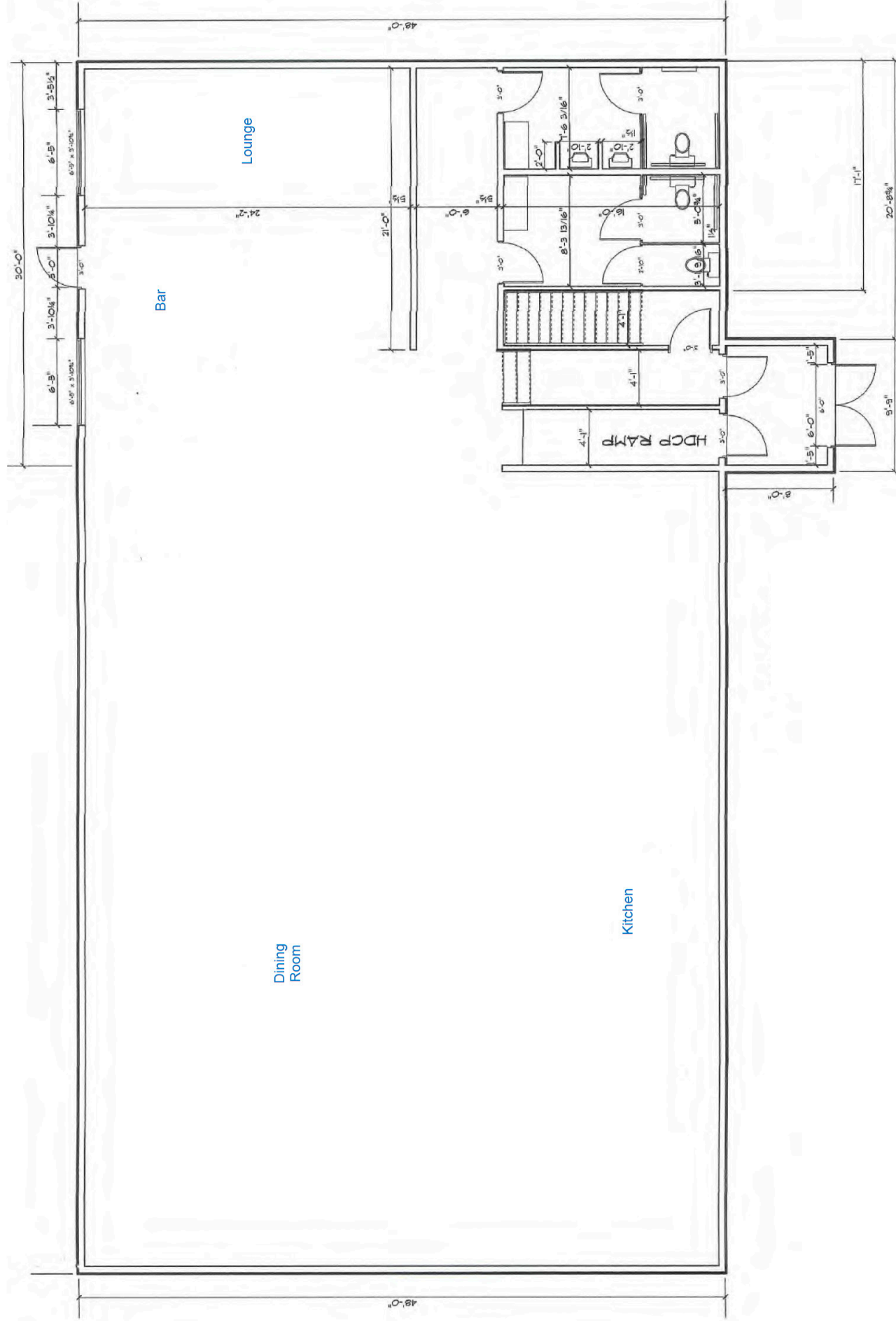
605.310.4509
mike.knudson@vbclink.com

AERIAL PHOTO

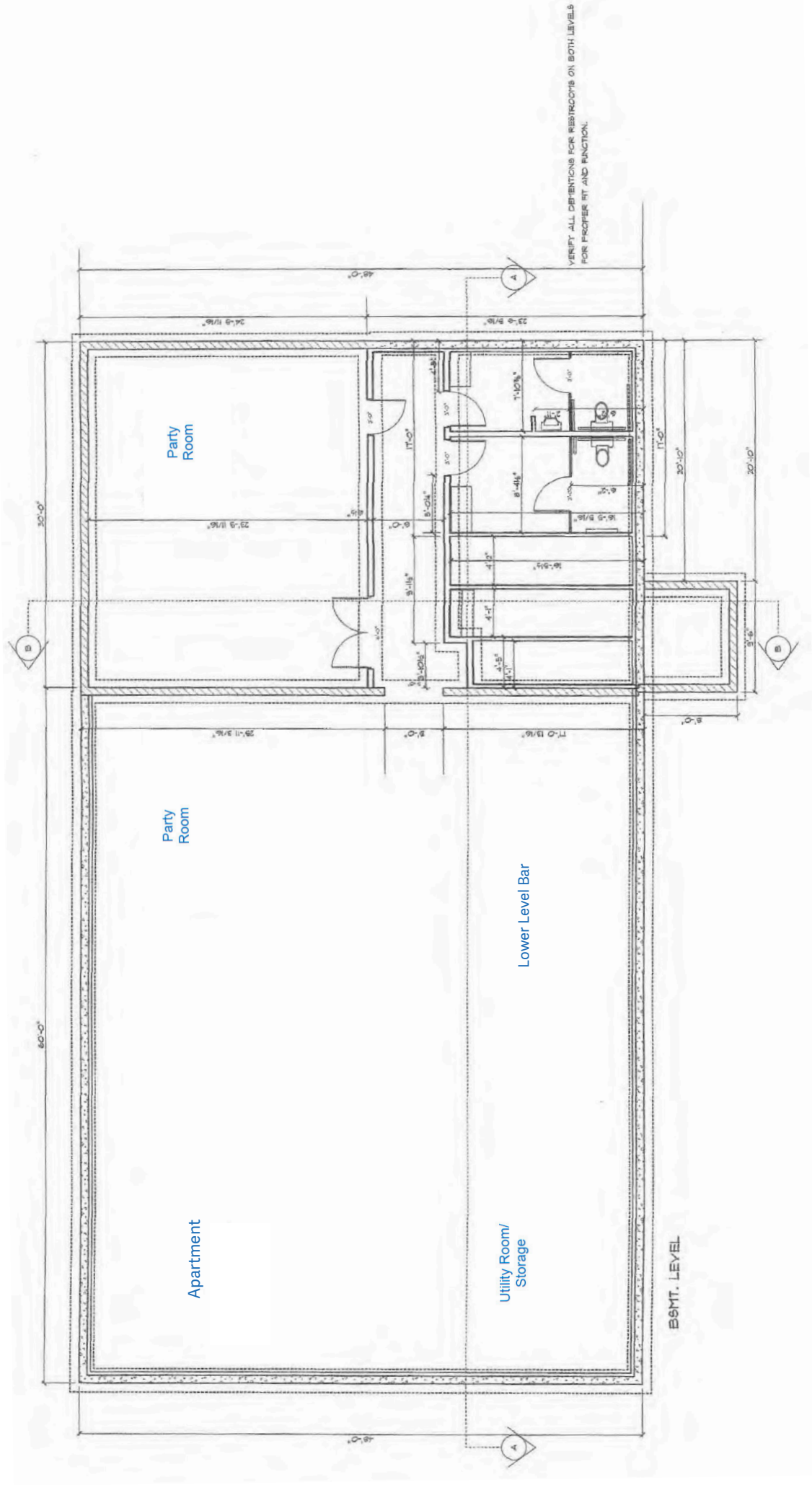




FLOOR PLAN - MAIN LEVEL



FLOOR PLAN - LOWER LEVEL



PHOTOS



PHOTOS

