

FOR LEASE

Westridge Mall

WEST SIDE RETAIL - ELLIS ROAD CORRIDOR

8605 West 26th Street | Sioux Falls, SD 57106



SIZE

1,787 sqft



PRICE

\$14.00 psf (NNN)

Estimated NNN: \$5.50 psf



LOCATION

Located along the rapidly developing Ellis Road Corridor, this site is near schools and surrounded by thriving retail destinations, townhomes, single-family homes, and modern apartments.



T.I.A.

Negotiable



LAYOUT

Formerly a karate studio, this space offers an open retail floor, one office, a private restroom, and a shower room.



AREA TENANTS

Shenanigans Sports Bar & Grill, Edward Jones, Lewis, Sanford Acute Care, Casey's, Farm, Healing Touch Massage, Fit Body Boot Camp, Fareway Meat & Grocery, Risen Hope Baptist Church, Valentino's Pizza, Dollar Tree, McDonald's, Valvoline, Starbucks, Taco Bell

Information deemed reliable, but not guaranteed.

FOR LEASE

Area Map Westridge Mall



FOR
LEASE

Site Map
Westridge Mall

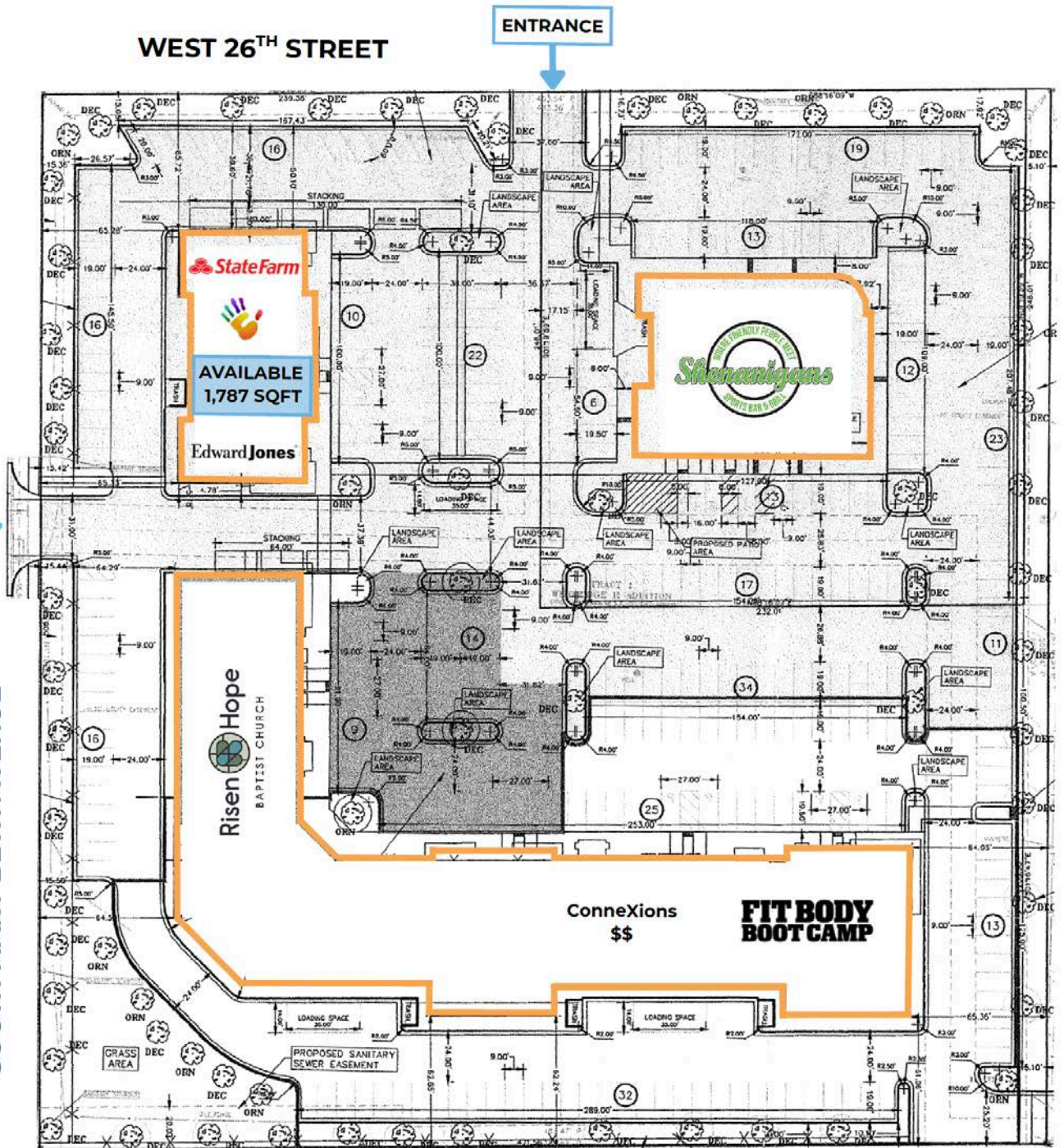
WEST 26TH STREET

ENTRANCE

ENTRANCE

SOUTH MARY BETH AVENUE

ELLIS ROAD



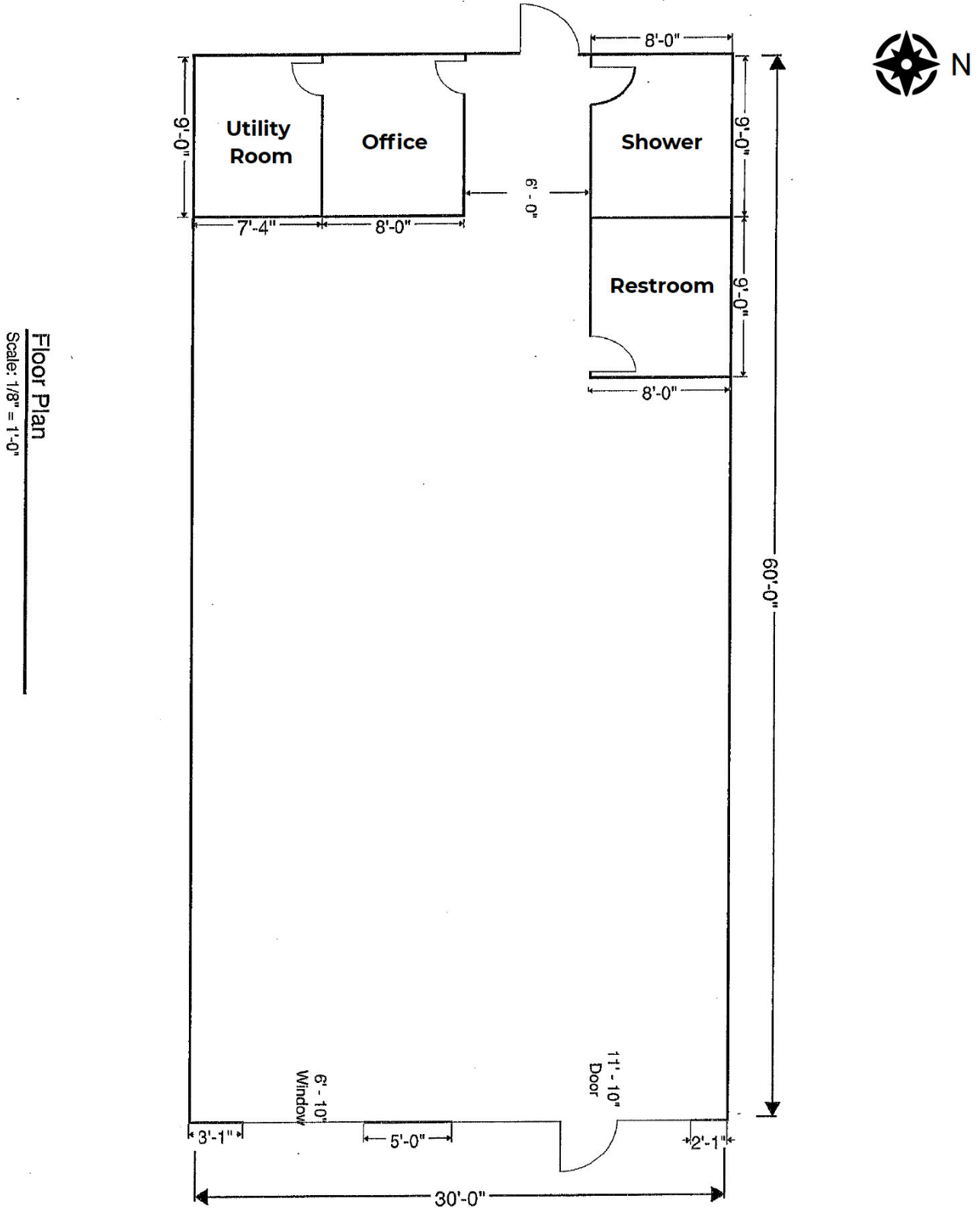
FOR
LEASE

Building Floor Plan
Westridge Mall



FOR
LEASE

Floor Plan
Westridge Mall

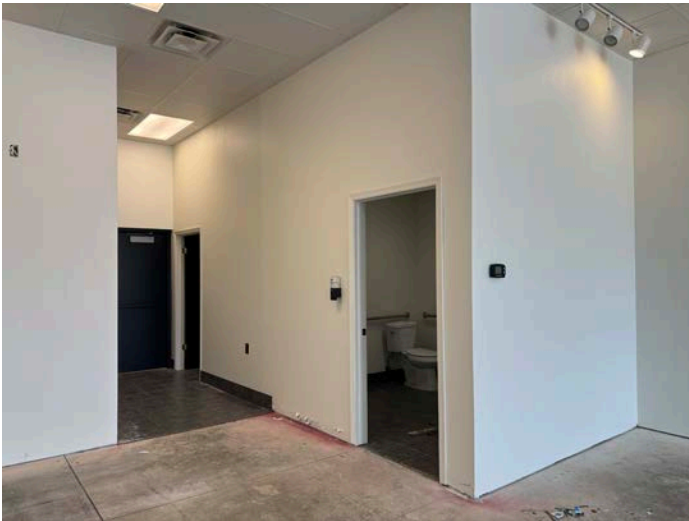


Floor Plan
Scale: 1/8" = 1'-0"



**FOR
LEASE**

Photos
Westridge Mall



**FOR
LEASE**

Photos
Westridge Mall

