

FOR LEASE

Raintree Center

PROFESSIONAL OFFICE / RETAIL SPACE

7640 South Louise Avenue, Suite 110 | Sioux Falls, SD 57108



SIZE

1,268 sqft



PRICE

\$17.00 psf (NNN)

Estimated NNN: \$8.55 psf



LOCATION

This convenient neighborhood strip center is located on the northeast corner of 85th Street and Louise Avenue.



TRAFFIC

Average of 22,900 vpd on 85th Street and Louise Avenue.



LAYOUT

Layout includes a welcoming waiting / reception area with large storefront windows, four private offices, a storage room, and convenient in-suite restroom.



AREA TENANTS

Subway, Burn Boot Camp, Farm Bureau Finance, Culver's, Circle K, Billion Auto, Lewis, Avera Health, Starbucks, Sanford Clinic, Silverstar Car Wash, Plaza Azteca

Information deemed reliable, but not guaranteed.

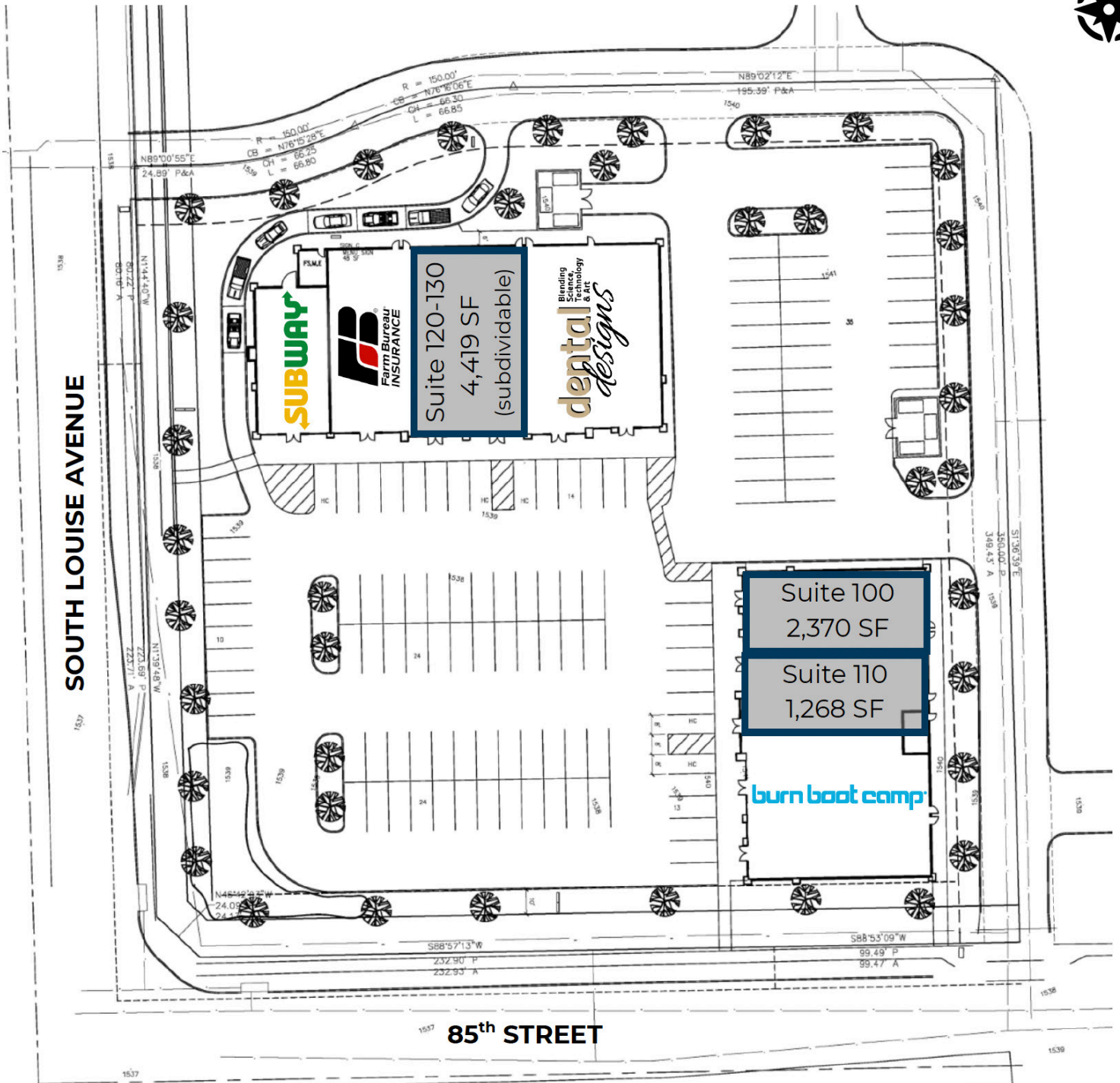
FOR LEASE

Area Map Raintree Center



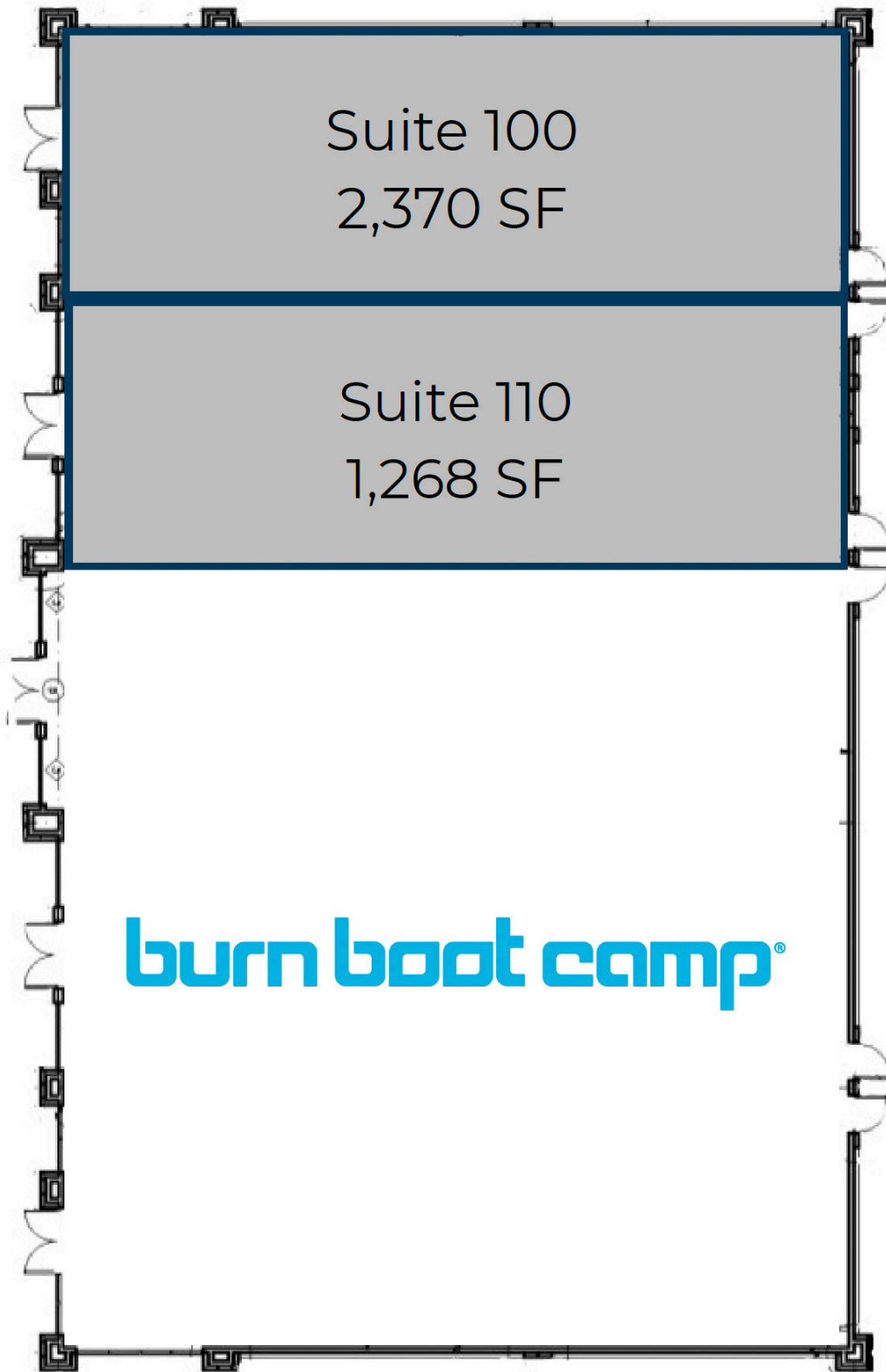
FOR LEASE

Site Plan Raintree Center



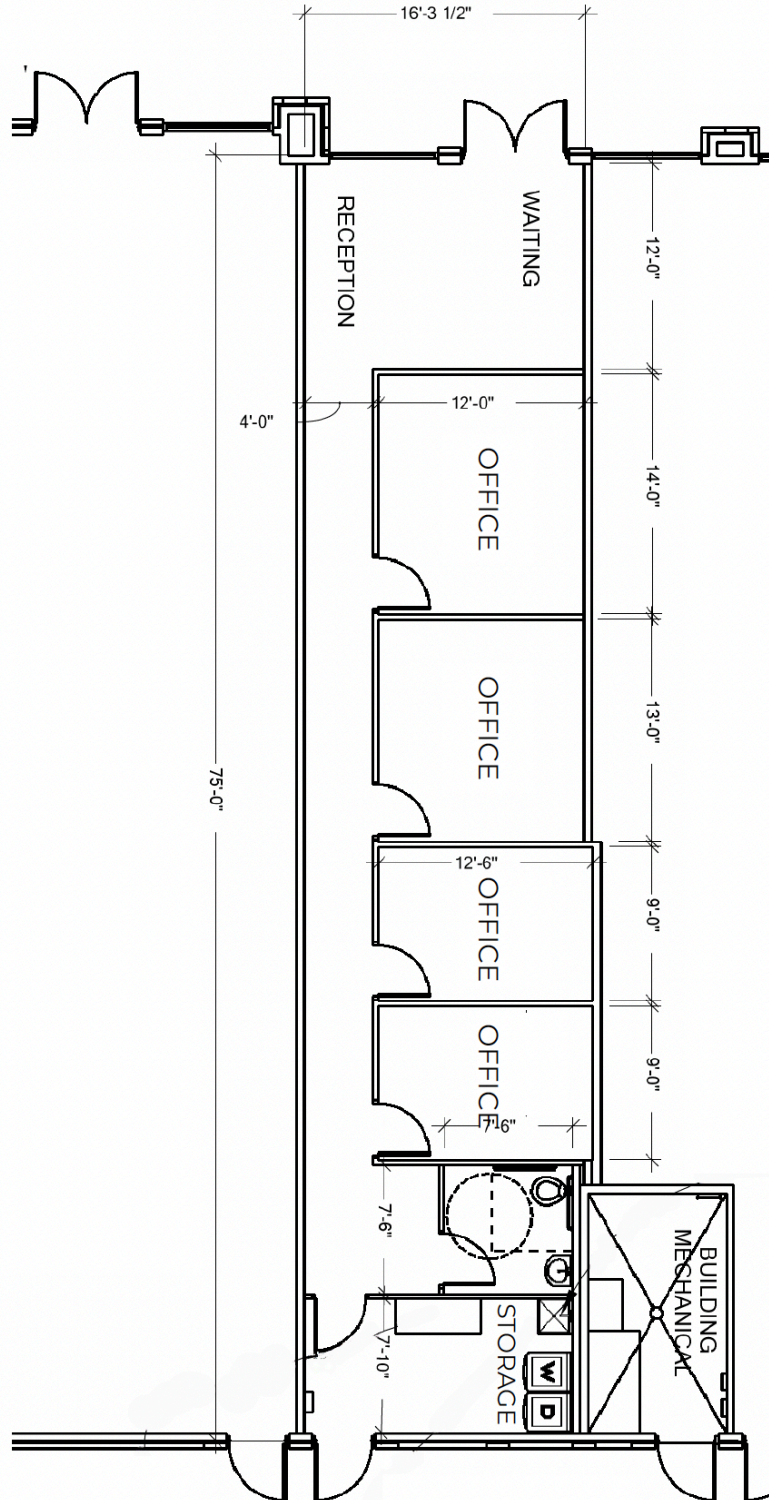
FOR
LEASE

Building Floor Plan
Raintree Center



FOR
LEASE

Floor Plan
Raintree Center



FOR
LEASE

Photos
Raintree Center

