

FOR SALE

Hazeltine Land

NW CORNER OF MARION & BENSON ROAD

Sioux Falls, SD 57107



SIZE

11.51 acres
(subdividable)



PRICE

\$10.00 - \$15.00 psf

See page 3 & 4 for details.



LOCATION

Northwest corner of Marion Road and Benson Road in Sioux Falls, SD.



TRAFFIC

Benson Road: 8,800 vpd
Marion Road: 8,800 vpd



ZONING

Office / Retail



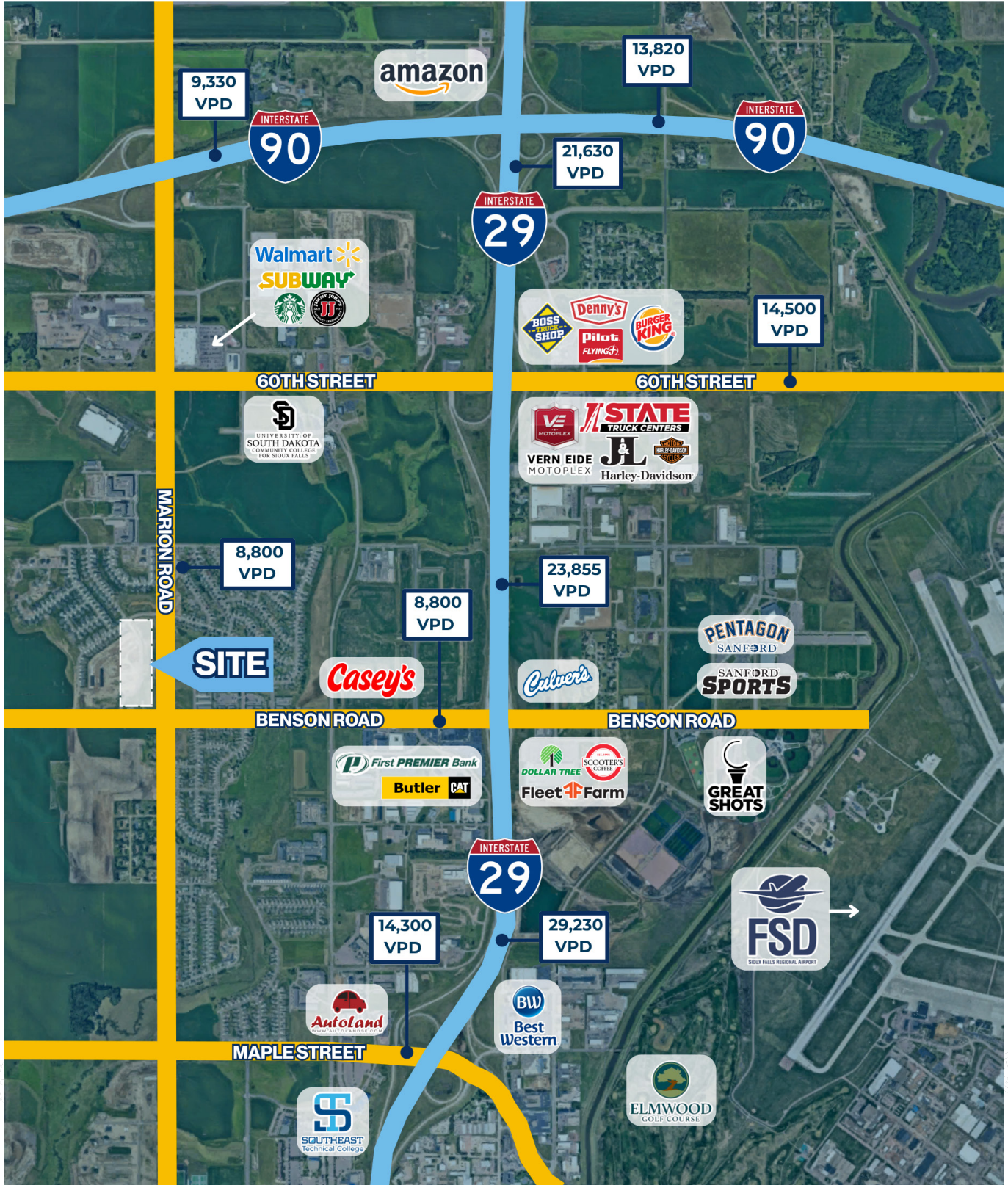
AREA TENANTS

Southeast Technical Institute, University of South Dakota Community College, Sanford Pentagon, Great Shots, Fleet Farm, Walmart, Casey's, Starbucks, Jimmy John's, Culver's

Information deemed reliable, but not guaranteed.

FOR SALE

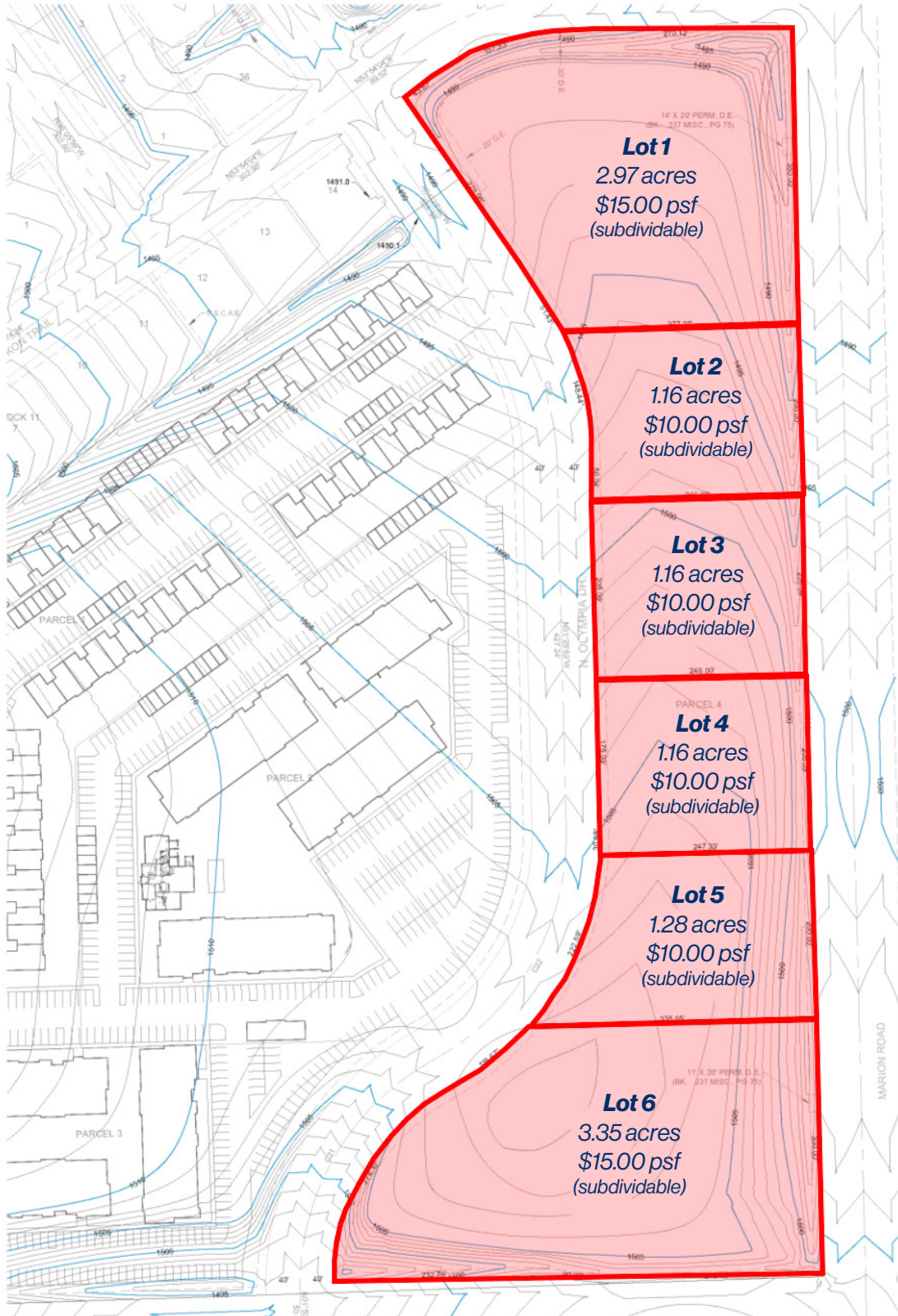
Area Map
Hazeltine Land



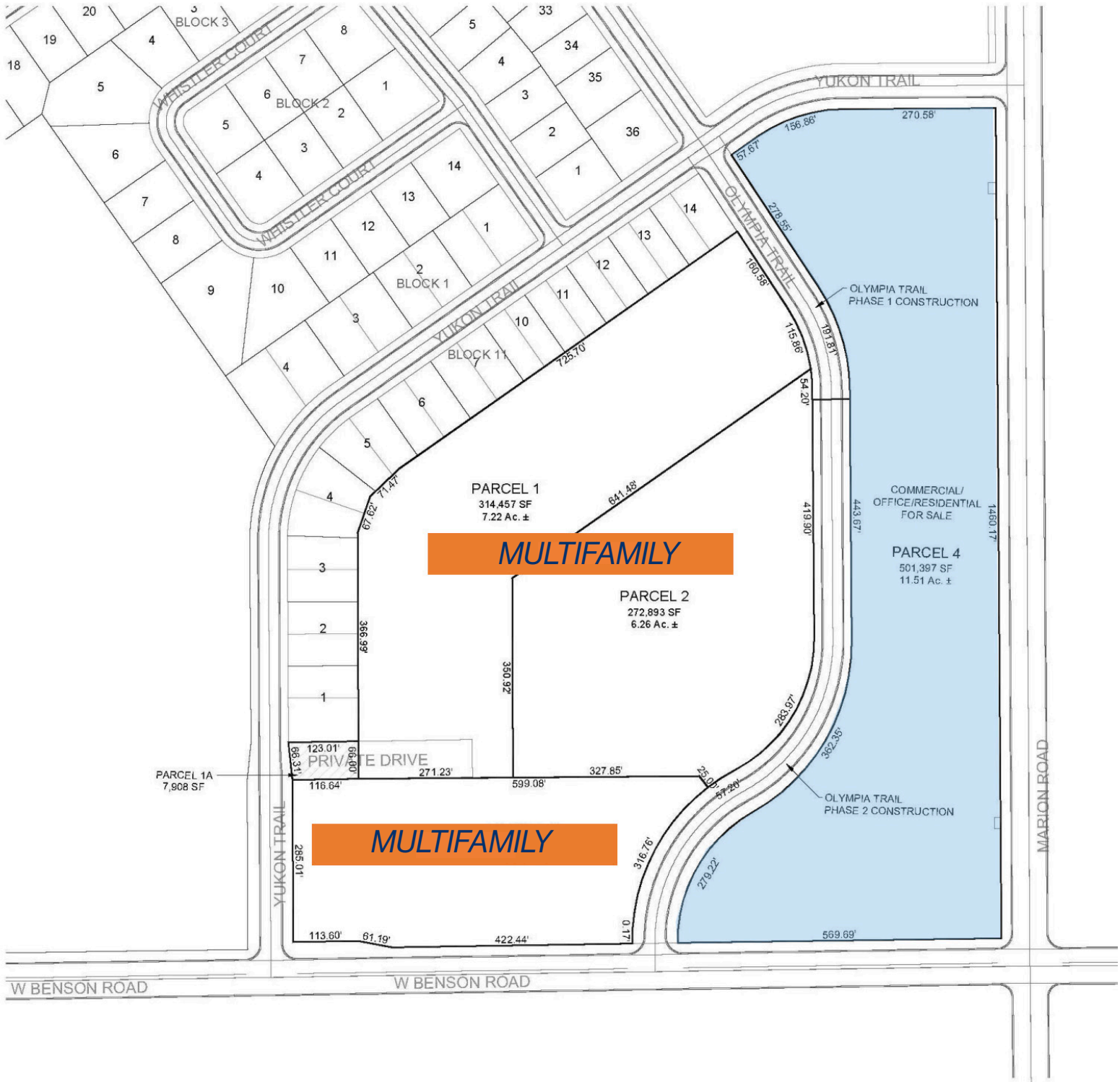
FOR
SALE

Site Plan + Pricing
Hazeltine Land

Flexible Lot Sizes



Flexible Lot Sizes



**FOR
SALE**

Parcel Map
Hazeltine Land

