

FULLY IMPROVED, BUILD-READY PARKSIDE AT GRANITE VALLEY MULTIFAMILY

6000 N SEUBERT AVENUE, SIOUX FALLS SD

FOR SALE



LOCATED IN GROWING NORTHCENTRAL NEIGHBORHOOD



SIZE

384,665 +/- SF
(8.83 +/- Acres)



PRICE

\$3.85 PSF



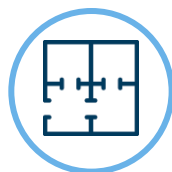
LOCATION

North Sioux Falls development on N Seubert Avenue & E 67th St North, by new Granite Valley Park. Easy access to I-90 & I-229 & many services.



SCHOOL

Brandon-Valley
School District



ZONING

RA2 - MultiFamily moderate density up to 48-unit apartments 3-stories high & also provides for 2-family townhomes.



NEIGHBORS

Granite Valley Park, Walmart, Sioux Falls KOA Journey, Love's Travel Stop, Burger King, Arby's, Circle K, Get N Go, McDonalds, Catfish Bay, Sioux Falls Regional Airport, Flying J & more.

Information deemed reliable but not guaranteed.



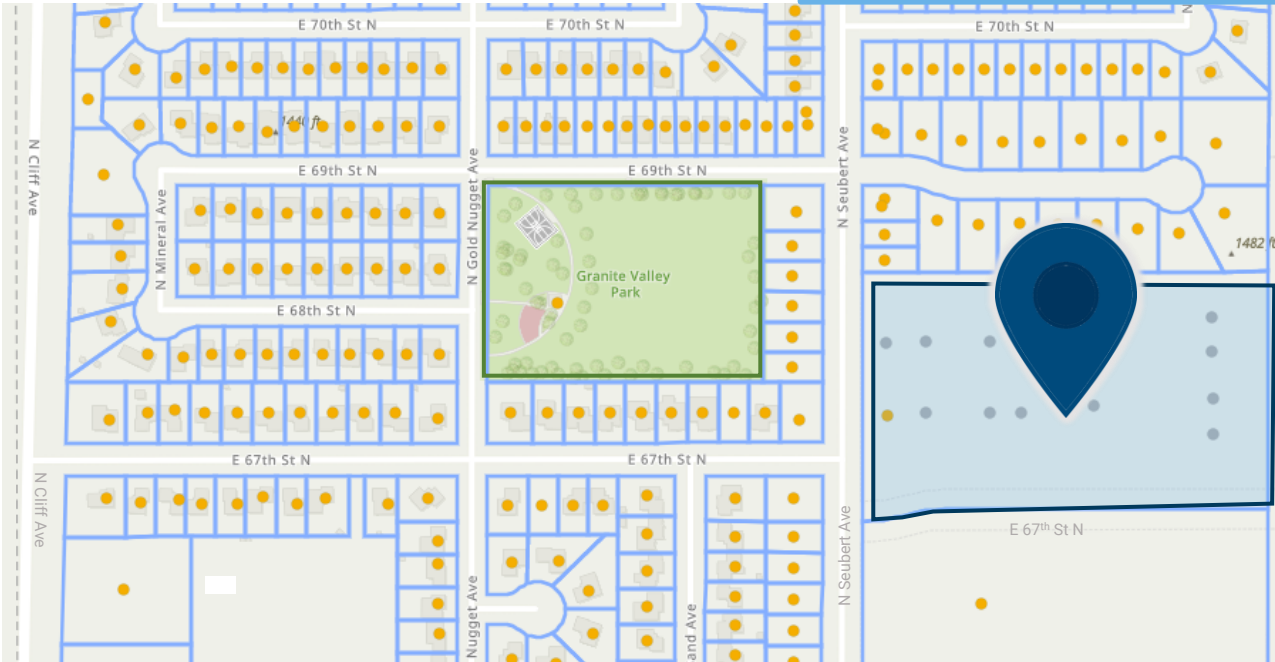
605.361.8211 | VBCcommercial.com

2571 S Westlake Dr #100 Sioux Falls SD 57106

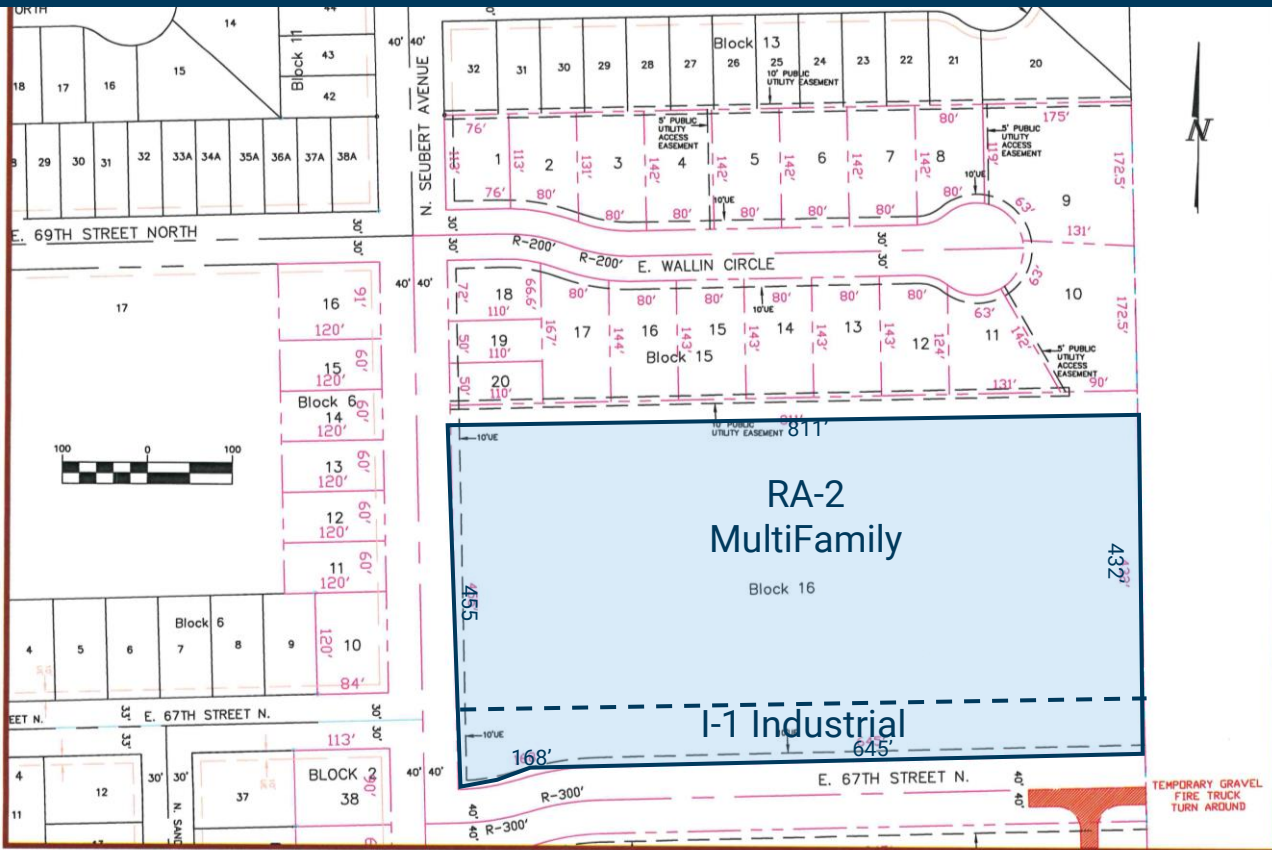
MIKE VAN BUSKIRK

605.366.0936
mike@vbclink.com

SITE MAPS



SITE DEVELOPMENT COMPLETE



605.361.8211 | VBCcommercial.com

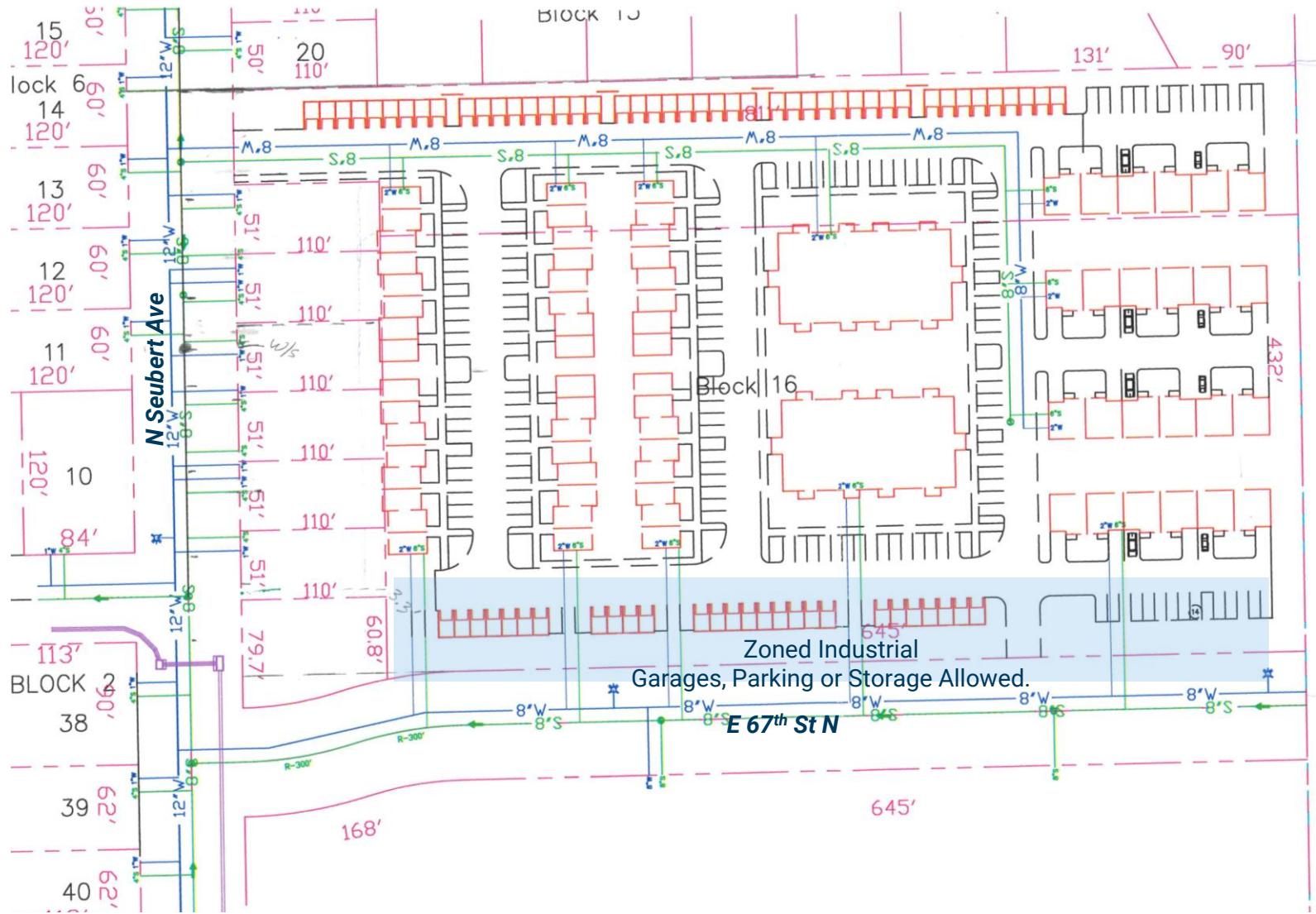
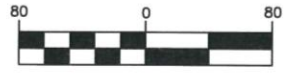
2571 S Westlake Dr #100 Sioux Falls SD 57106

MIKE
VAN BUSKIRK

605.366.0936
mike@vbclink.com



CONCEPTIAL PLAN



605.361.8211 | VBCcommercial.com

2571 S Westlake Dr #100 Sioux Falls SD 57106

MIKE
VAN BUSKIRK

605.366.0936
mike@vbclink.com

GRANITE VALLEY PARK



605.361.8211 | VBCcommercial.com

2571 S Westlake Dr #100 Sioux Falls SD 57106

MIKE
VAN BUSKIRK

605.366.0936
mike@vbclink.com



AREA MAP



605.361.8211 | VBCcommercial.com

2571 S Westlake Dr #100 Sioux Falls SD 57106

MIKE
VAN BUSKIRK

605.366.0936
mike@vbclink.com